

# GERMAN WASP

*Vespula germanica*

Yellow bands are sub-triangular on the thorax.



Behind the eye fully yellow.

# COMMON WASP

*Vespula vulgaris*

Yellow bands are almost straight lines.



Behind the eye not fully yellow, black interrupts the stripe.

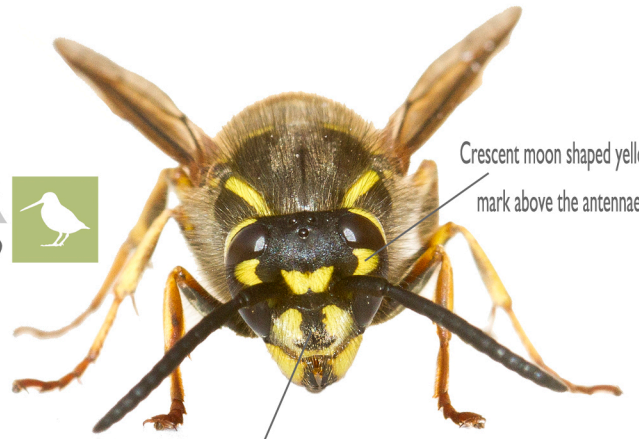
Large rounded yellow mark above the antennae.



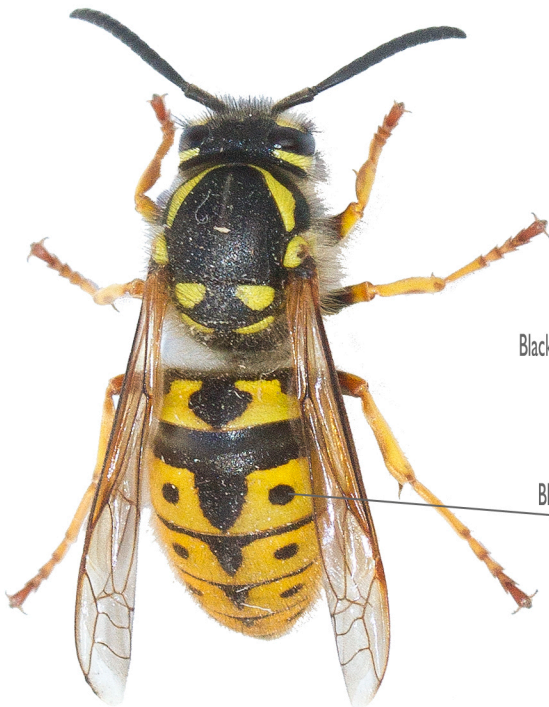
Face usually with three black spots.

DISCOVER THE WILD 

Crescent moon shaped yellow mark above the antennae.



Anchor shape on the face.



Black dots on the abdomen are usually often joined with the black rings (though not always).

Black dots on the abdomen usually separate to the black rings (though not always).

